

PART OF THE N.W. 1/4 OF SECTION 9, T.6N., R.2E., S.L.B. & M.
GREEN HILL COUNTRY ESTATES PHASE NO. 5

63

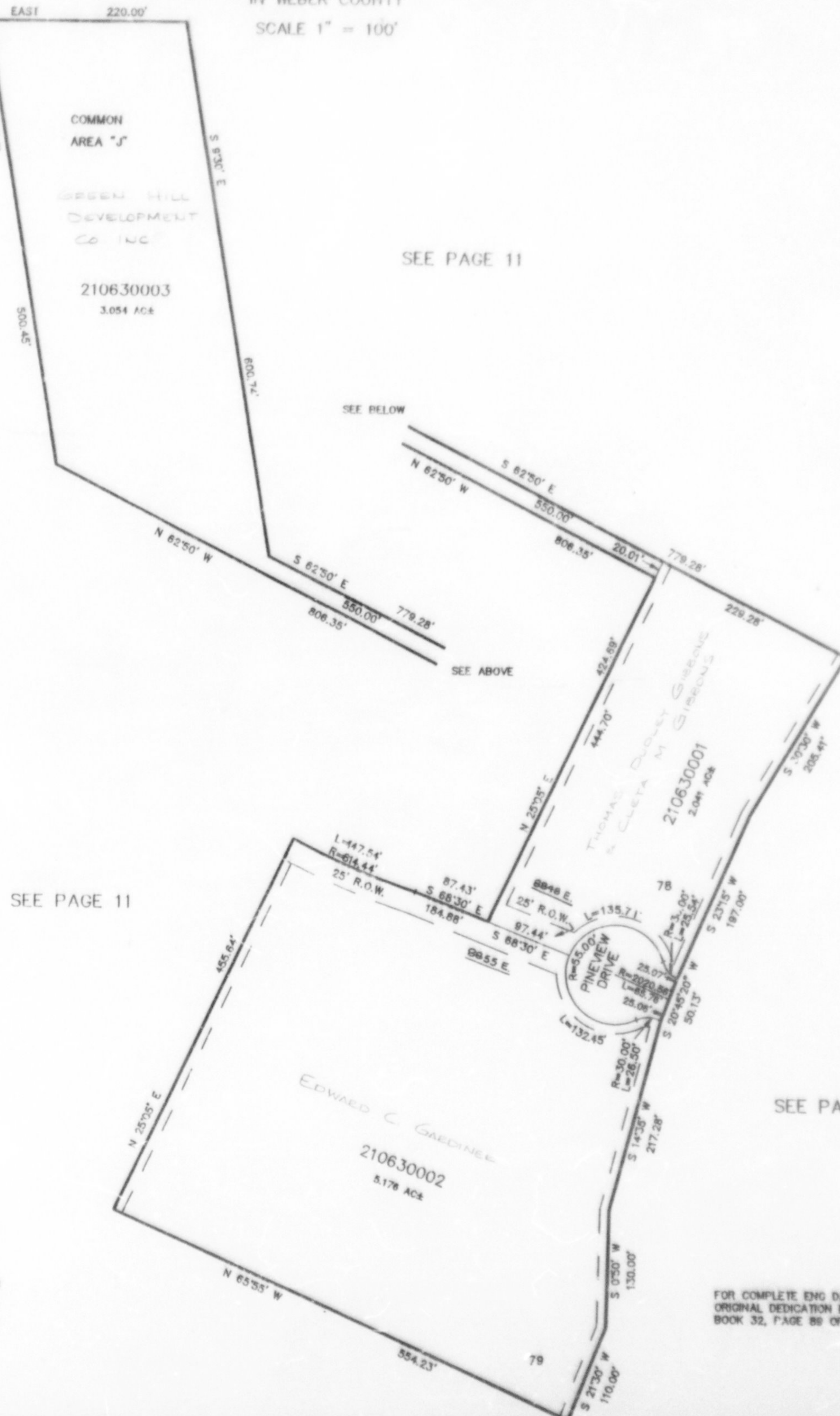
IN WEBER COUNTY

SCALE 1" = 100'

TAXING UNIT: 231

SEE PAGE 11

SEE PAGE 11



SEE PAGE 11

SEE PAGE 58

10' UTILITY & DRAINAGE EASEMENTS EACH SIDE OF PROPERTY LINES AS INDICATED BY DASHED LINES EXCEPT AS OTHERWISE SHOWN.

FOR COMPLETE ENG DATA SEE ORIGINAL DEDICATION PLAT IN BOOK 32, PAGE 89 OF RECORDS.